



E&V ID W-046AMO

JESÚS

Contemporary villa in pine forest with sea views

TOTAL SURFACE

approx. 695 m²

NUMBER OF BEDROOMS

7

PLOT SURFACE

approx. 80,000 m²

ASKING PRICE

€18,800,000



Property Details

Total Surface

approx. 695 m²

Plot Surface

approx. 80,000 m²

Number of Bedrooms

7

Asking price

€18,800,000

Total Number of Bathrooms

7

Elevator



Views

Water View, Green View, Open View,
Mountain View

Year of construction

2021

Air-Condition

Fully Air-conditioned

Commission Text

Availability upon agreement.

Engel & Völkers does not accept responsibility as the information provided in this brochure is for information only and it is subject to errors, omissions, change of price or withdrawal without notice.

Taxes, notary and registry fees must be paid by purchaser, the commission to E&V paid by the seller as stipulated by Spanish regulations.



Property Description

This modern, contemporary property is centrally located yet surrounded by nature, offering privacy with beautiful views of the sea and sunrise. This spacious villa has six bedrooms, all with en-suite bathrooms, as well as separate staff accommodation. On the upper level, there are three living areas, a chill-out area with sea views, a dining area with kitchen and a library on a higher level. Unique to the property is the generous pool, which offer plenty of space to relax and enjoy spending quality time with friends and family. The master suite has a walk-in wardrobe, a spacious bathroom, a private terrace and access to one of the three pools

reserved for the master suite. The lift takes you to the lower floor, where there are utility rooms and a multifunctional area that can be used as a gym, spa or cinema. On the same level is access to a double garage, a staff apartment and a guest apartment. The staff apartment and guest apartment also have a separate entrance from the outside. Another highlight are the large windows that flood the property with natural light and the ultra-modern design. If you appreciate spacious living areas and tranquillity, this could be the perfect property for you.



Location Description

The property is located in an excellent position, just five minutes from Ibiza Town and fifteen minutes from the airport. Golf players benefit from the proximity to the Ibiza Golf Club, which is only seven minutes away. Nearby are Jesús and Santa Gertrudis, offering a variety of leisure and dining options. Talamanca Beach, Marina

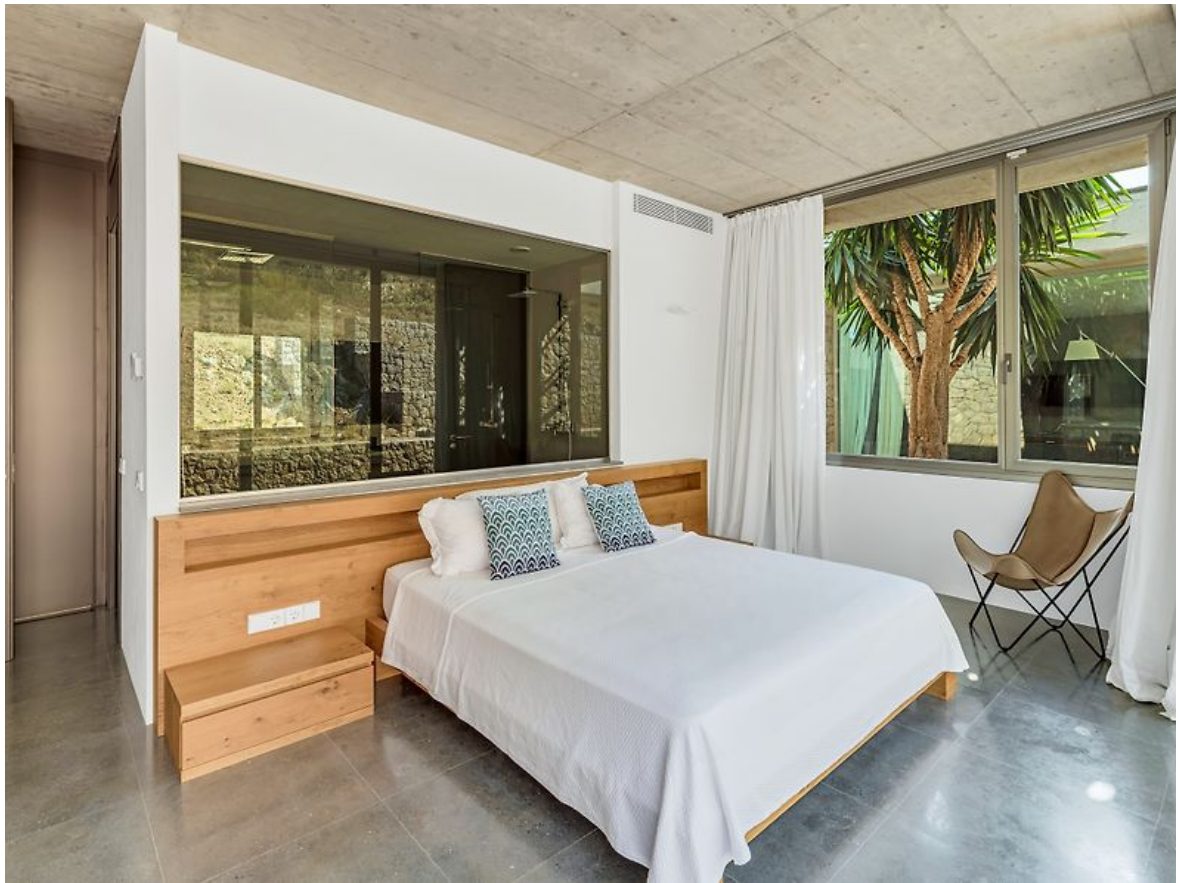
Botafoch and well-known clubs are also within easy reach. Santa Gertrudis, in the heart of the island, a central square with cafés and restaurants, while preserving the traditional character of Ibicencan bars.













ESCALA DE LA CALIFICACIÓN ENERGÉTICA

Consumo de energía
kWh / m² año

Emisiones
kg CO₂ / m² año

A más eficiente

B

8,4

C

D

22,2

E

F

G menos eficiente

Important Notice

In compliance with the current Personal Data Protection Law, we inform you that your personal data were included in an automated file owned by Engel & Völkers Ibiza, S.L., with CIF B57138182 and fiscal address at Avda. Santa Eulalia, 17 bajos, 07800 Ibiza, Spain, to attend to the commitments derived from the relationship between the two parties. Engel & Völkers Ibiza, S.L. informs that all data will be handled lawfully, loyally transparently, appropriately, suitably, with restrictions, precisely and kept up to date. You may exercise your right to access, rectify, limit treatment, supress, withdraw and oppose to your personal data treatment, as well as the consent provided for its treatment by sending your request by email to Ibiza@engelvoelkers.com.

